



insight

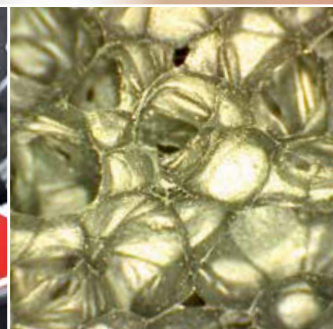
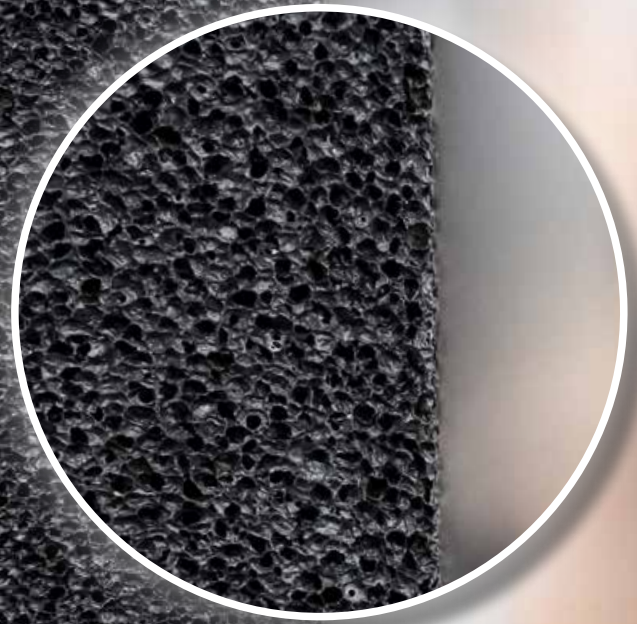


Cellular rubber • Cellular polyethylene • Sponge rubber • Fluid sealants • Filtration technology

NEW!

EPDM 2000 SEMI OPEN CELL

- ▶ **Low emission**
Clear sailing for EPDM S-LE
- ▶ **NEW: EPDM-X**
World's first customised EPDM
- ▶ **NEW: EPDM 2000**
Best semi-open cell quality
- ▶ **Colourful variety**
EVA in new colours and densities





Dear readers,

Hand on heart: Why do we buy clothes that we know were produced cheaply in China and often don't have the quality we actually want? Because it is simply much cheaper, despite long transport routes and middlemen who have to earn money from it. Extremely low, often even state-subsidised production costs make it possible. But what if you could buy higher quality clothing designed in Germany and produced in Europe directly from the manufacturer and – this is where it gets crazy – at a lower price? Just between us: We are, of course, the manufacturer of high-quality yet affordable materials in this hypothetical situation.

While competitors (e.g. Interflex) can only supply comparable qualities made in Asia as dealers (although they falsely claim at trade fairs that they are material manufacturer), our customers benefit from the guarantees that only European products can offer: Delivery reliability thanks to short transport routes, high quality standards, direct dialogue with the manufacturer. Another plus: our

broad positioning. This enables us to offer attractive pricing and firmly establishes us in the market. You can rely on that.

We present our three latest portfolio additions in this edition of **insight**. We hope you enjoy reading this brochure and we hope we are offering a perfectly suited solution for your applications. If not, please do not hesitate to contact us.

Warm regards,

Achim Raab,
CEO

ppa. Axel Wynands,
Head of Sales & Marketing

LOW EMISSION: Clear sailing for EPDM S-LE

With our KOEPPcell® EPDM-S, we have been offering our customers a closed-cell, soft-elastic cellular rubber for many years, which is also available in peroxide-cured quality. Unlike the previously available versions, which were all sulphur-cured, these contain no sulphur. This prevents clouding of LED car headlights, for example. With the new EPDM S-LE, we are going one step further. LE stands for Low Emission. And this qualifies our S-LE for numerous new applications.

It is suitable for vehicle interiors

In the previous edition of **insight**, we reported on our development of the climate-neutral rubber PECU – a collaboration with

Covestro. We have transferred our expertise in binding substances in foam, so that they can no longer escape, to our EPDM-S-LE. The result is really impressive, as emissions have been reduced by an impressive factor of 8. This

applies to both the VOC and FOG values and odours. This is easily sufficient to fulfil the strict regulations for use in vehicle interiors.

	EPDM-S	EPDM-S LE
VOC VDA 278	800 PPM µg/g	125 PPM µg/g
FOG VDA 278	2,100 PPM µg/g	841 PPM µg/g
Odour VDA 270	4.5	2.0
Fogging DIN 75201-B	8.0 mg	1.3 mg



NEW: EPDM-X

The X can be anything. And you decide what!

In mathematics, the letter X is often used to denote a variable. This is exactly what the X stands for in our latest bestseller: EPDM-X. Do you need a foam with very specific properties in terms of density, temperature resistance, hardness or even dimensions? But everything you find on the market is a compromise that fulfils some requirements but neglects others? Then, with EPDM-X, we now offer you the opportunity to order a foam that meets your requirements exactly – and not just approximately or largely.

Why? Because we can.

The development and production of ever new, customised qualities is a challenge that we can handle like nobody else. Decades of experience, intelligent tool technology and all-round raw material expertise make it possible to produce customised cellular rubber to meet customer requirements. And that makes perfect sense. This is because each of the countless areas of application for our

EPDM places different demands on its properties. **So why not equip every EPDM with the attributes it needs – if you can? We can!**

At FOAM EXPO 2024, we presented our cellular rubber with the X-factor. Since then, we have been developing and producing individualised EPDMs for major customers within the framework of agreed specifications, which then bear their personal specification number instead of



W. KÖPP – YOUR EUROPEAN MANUFACTURER



the variable X in the name. Do you already have an application in mind that requires a specific foam solution? **Please feel free to contact us.**

Made in Europe, developed in Germany

Traceable high quality, truly reliable supply and absolutely competitive prices thanks to reliable sales make our products the perfect choice for existing customers and an increasing number of new customers. What use are materials from the Far East that offer sensitive points of attack in terms of quality and long delivery routes? Especially when entire production chains depend on these

materials? The feedback from our customers speaks for itself. Reliability is more important than ever. This not only applies to our X. "The fact that we can also keep up with our competitors from Asia in terms of price makes it much easier for our customers to decide in favour of our products," confirms Sales Manager Axel Wynands.

One foam, endless possibilities:
Material parameters: Tell us!

**20 m
WITHOUT
adhesive
seam**

NEW: EPDM-2000

**Direct from the manufacturer.
Without adhesive seam and at
the best price!**

After the successful launch of our EPDM-1000, it quickly became clear that we should immediately focus our manufacturing and development expertise on a quality that would significantly expand the range of applications for our EPDM. On the one hand with regard to the resetting behaviour, on the other hand with regard to the diversity of variants.

**Slow recovery, no
glued seam = customer
request fulfilled**

The structure of the 2000 series combines the positive properties of both open-cell and closed-cell foam. It has the flexibility of an open-cell EPDM and the sealing behaviour of a closed-cell EPDM. It moulds itself to a wide variety of uneven surfaces without much effort. The material is particularly practical where different pressing pressures act on the material at the same time. For example, components that are unequal in height, density and structure can be sealed with the same material thickness. The soft structure and the resulting slow recovery behaviour make the foam attractive for many applications, e.g. in the automotive industry for sealing cables and supply lines of different thicknesses in the dashboard.

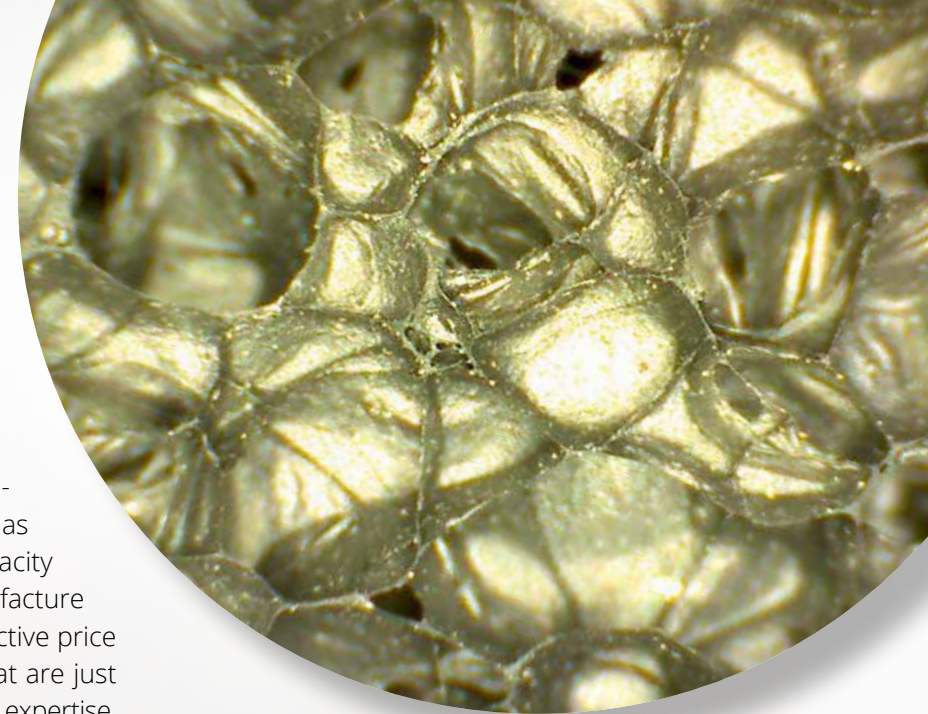


Our 2000 demonstrates flexibility not only in its structure, but also in its design. In addition to 2 metre blocks with a thickness of 65 mm, we also supply sheets and continuous rolls with a width of 1 metre, also with pressure-sensitive adhesive. In order to be able to supply the highly

Material parameters:

	EPDM 2070	EPDM 2100
Bulk density	70 ± 15 kg/m ³	100 +/-20 kg/m ³
Compression hardness (25 %)	2 kpa	4 kpa
Compression set (50 %, 23°C, 24 h)	<10 %	<10 %

EPDM-2100 with 60x magnification



sought-after continuous product without glued seams, the company invested in a system almost 100 metres long. Here, EPDM runs continuously from the extruder through an oven line as a 70 or 100 kg variant. The high production capacity opens up the possibility of being able to manufacture the Köpp "semi-open cell" at an extremely attractive price – in concrete terms: cheaper than suppliers that are just dealers without development and manufacturing expertise, such as Interflex from France.

Developed in Germany, ready-made in Romania (Europe), everything from a single source, everything from KÖPP. We keep our promises!

**Semi open cell? Semi-closed?
Both are right.**

If you look at the structure of the 2000 series, it is clear that it is a mixed-line foam. In the manufacturing process, the originally closed-cell foam is crushed with rollers, causing the cell walls to burst open. The more often the process is repeated, the more open cells are formed. In the end,

these foams are not purely open-cell foam. Nevertheless, foams that fulfil the specification are commonly referred to as "open cell" by the industry – also internationally. In our marketing, we therefore call our 2000 series "semi-open cell" or simply "open cell" quality.

**Interested in endless goods?
Find out now about the available
EPDM qualities.**

The 2000 series is suitable for sealing material wherever gaps are irregular, e.g. when sealing the dashboard



Compared with EPDM-1000, the EPDMs in the 2000 series exhibit significantly slower recovery behaviour

**FLEXIBLE AND
UP TO ANY
PRESSURE**

**Size of the blocks
with fabrication skin:**

- EPDM 2070:
2,000 x 1,000 x 65 mm
- EPDM 2100:
2,000 x 1,000 x 56 mm

Version:

- Blocks
- Endless roll up to 20 m
WITHOUT adhesive seam
- Sheets
- With and without
adhesive on request

COLOURFUL DIVERSITY FOR EVA:

new colours, new densities

Market niche found, market niche filled. Many of our development stories can be summarised in this way. New areas of application place new demands on a material; as a result, the properties of products are adapted. Our EPDM-X (in this issue) shows how successfully we achieve this.

In the case of our new EVA grades, however, a competitor discontinued the production of these grades. Demand for them has not fallen, on the contrary. "We have everything we need to produce the material: Machines, expertise, capacities," says Managing Director Achim Raab. So let's go. KOEPPcell® EVA is now not just available with a density of 70 kg, but also with 100, 120, 150, 200, 300 up to 400 kg and

in all conceivable colours. Until now, KOEPP only had black, white and skin colours in its portfolio. These colours are in particularly high demand for orthopaedic and medical technology. It goes without saying that the product has been tested for skin compatibility. Oeko Tex standards are also met.

Genuine product extension

The new densities have already been in frequent demand in the past. The fresh colours that have been added are finding new markets, particularly in car and truck washes. EVA has just the right amount of elasticity, does not absorb water thanks to its closed-cell structure and therefore it retains its properties, it is tear-resistant and



durable. As every brush manufacturer uses different colours for their cleaning cloths, our selection is correspondingly large. The new shades also open up further possibilities for the cosmetic packaging industry, as well as for orthopaedic technology.

Do we also have the right EVA for your application? **Please do get in touch. We'll find out together.**

OEKO-TEX®
INSPIRING CONFIDENCE



www.koepp.de

W. KÖPP GmbH & Co. KG

Aachen · Germany · Phone: +49 (0) 241 16605-0 · info@koepp.de

Bovenden Subsidiary Plant

Bovenden · Germany

SC KOEPP Romania S.R.L.

Arinis, Maramures · Romania

Roop KOEPP Foam Technologies Pvt. Ltd.

Manesar, Gurgaon · India

solutions



in foam

